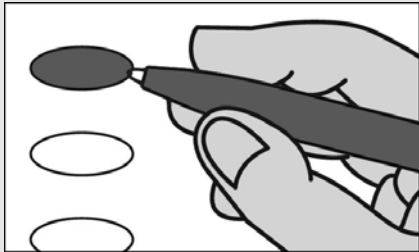


Official Ballot
Special General Election
April 28, 2020

State of Maryland

Instructions

Making Selections

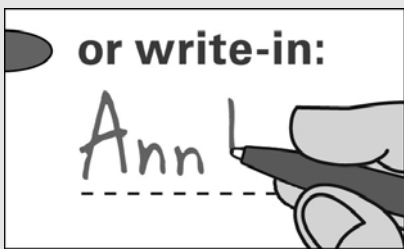


Fill in the oval to the left of the name of your choice. You must blacken the oval completely, and do not make any marks outside of the oval. You do not have to vote in every race.



Do not cross out or erase, or your vote may not count. If you make a mistake or a stray mark, you may ask for a new ballot.

Optional Write-in



To add a candidate, fill in the oval to the left of "or write-in" and print the name clearly on the dotted line.

**Representative in Congress
District 7**

Vote for 1

- Kimberly Klacik**
Republican
- Kweisi Mfume**
Democratic
- or write-in:

End of Ballot



Sample